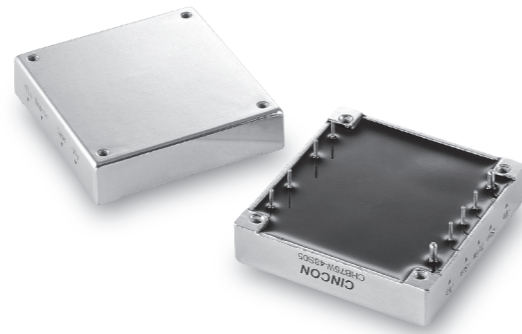


CHB75W

S E R I E S

37.5-75 WATT 4:1 INPUT RANGE DC-DC CONVERTERS



Features

- 37.5-75W Isolated Output
- Half Brick Package
- 4 : 1 Input Range
- Regulated Outputs
- Efficiency to 85%
- 300KHz Switching Frequency
- Five-Sided Shield Metal Case
- Continuous Short Circuit Protection

MODEL NUMBER	INPUT VOLTAGE	OUTPUT VOLTAGE	OUTPUT CURRENT		INPUT CURRENT		% EFF.	SIZE
			MIN.	MAX.	NO LOAD	FULL LOAD		
CHB75W-24S33	9-36 VDC	3.3 VDC		15 A		2611 mA	79	Half-Brick
CHB75W-24S05		5 VDC		15 A		3811 mA	82	
CHB75W-24S12		12 VDC	0mA	6.25A	50 mA	3765 mA	83	
CHB75W-24S15		15 VDC		5 A		3720 mA	84	
CHB75W-24S24		24 VDC		3.12 A		3720 mA	84	
CHB75W-48S33	18-75 VDC	3.3 VDC		15 A		1289 mA	80	Half-Brick
CHB75W-48S05		5 VDC		15 A		1883 mA	83	
CHB75W-48S12		12 VDC	0mA	6.25 A	50 mA	1860 mA	84	
CHB75W-48S15		15 VDC		5 A		1838 mA	85	
CHB75W-48S24		24 VDC		3.12 A		1835 mA	85	

NOTE: 1. Nominal Input Voltage 24 or 48 VDC

Specifications

INPUT SPECIFICATIONS:

Input Voltage Range.....	24V..... 9-36V 48V..... 18-75V
Undervoltage lockout	24Vin power up.....8.8V power down8V 48Vin power up.....17V power down16V

Positive Logic Remote ON/OFF^{3,4}

Input Filter PI Type

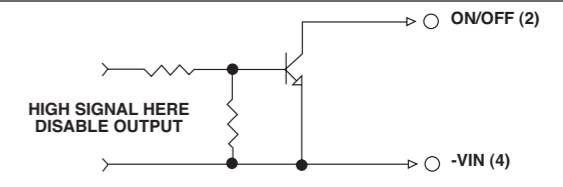
OUTPUT SPECIFICATIONS:

Voltage Accuracy :	±1% max.
Transient Response :25% Step Load Change.....	<500µ sec.
External Trim Adj. Range	±10%
Ripple & Noise, 20MHz BW, 3.3V & 5V.....	40mV RMS., max. 100mV pk-pk, max.
12V & 15V.....	60mV RMS., max. 150mV pk-pk, max.
24V.....	100mV RMS., max. 240mV pk-pk, max.
Temperature Coefficient.....	±0.03%/°C
Short Circuit Protection.....	Continuous
Line Regulation ¹	±0.2% max.
Load Regulation ²	±0.2% max.
Over Voltage Protection trip Range, % Vo nom.....	115-140%
Current Limit	110% ~160% Nominal Output

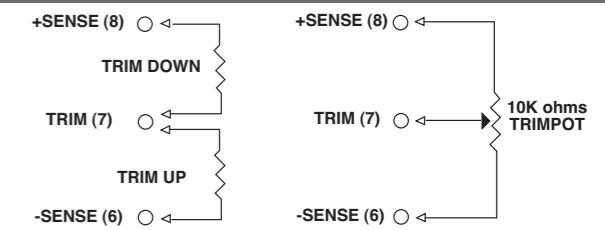
GENERAL SPECIFICATIONS:

Efficiency.....	See Table
Isolation Voltage	Input/Output..... 1500VDC min. Input/Case..... 1500VDC min. Output/Case..... 1500VDC min.
Isolation Resistance	10 ⁷ ohm min.
Switching Frequency	300KHz, Typ.
Operating Case Temperature	-40°C to 100°C
Storage Temperature	-55°C to +105°C
Thermal Shutdown, Case Temp.	100°C Typ.
Dimensions	2.28x2.40x0.50 inches (57.9x61.0x12.7 mm)
Case Material.....	Aluminum
Weight.....	94g

Remote On/Off Control



External Output Trim



PIN CONNECTION

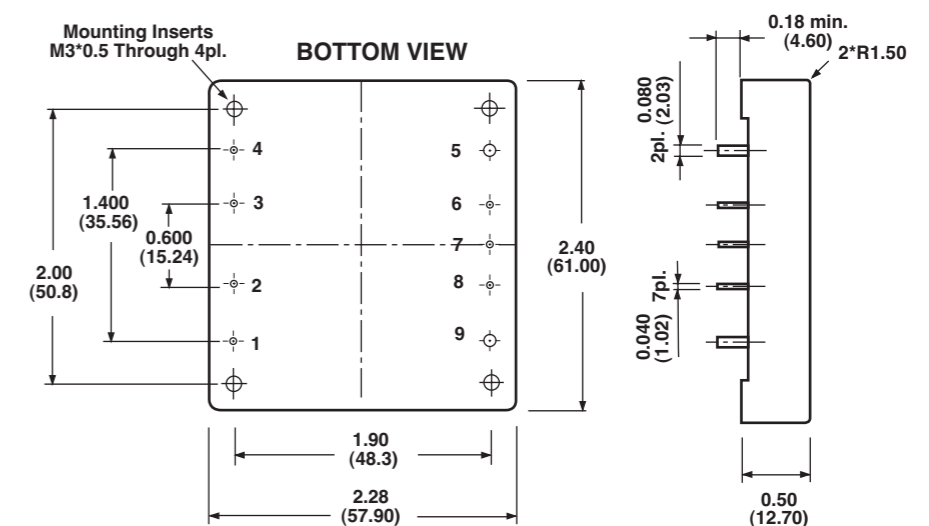
Pin	Function
1	+Vin
2	ON/OFF
3	CASE
4	-Vin
5	-Vout
6	-Sense
7	Trim
8	+Sense
9	+Vout

NOTE:

1. Measured From High Line to Low Line.
2. Measured From Full Load to Zero Load.
3. Logic Compatibility Open Collector ref. to -Input.
Module ON Open Circuit
Module OFF < 0.8Vdc
4. Suffix "N" to the Model Number with Negative Logic Remote ON/OFF.
Module ON < 0.8Vdc
Module OFF Open Circuit

CASE HB

All Dimensions In Inches(mm)
Tolerance Inches: x.xx= ±0.02, x.xxx= ±0.010
Millimeters: x.x= ±0.5, x.xx= ±0.25



All Specifications Typical At Nominal Line, Full Load and 25°C Unless Otherwise Noted.